



# GCSE Geography

---

SEAFORD COLLEGE

HEAD OF GEOGRAPHY & BTEC TRAVEL & TOURISM

MR WILLCOX - [DWILLCOX@SEAFORD.ORG](mailto:DWILLCOX@SEAFORD.ORG)

# Why should you choose GCSE Geography?

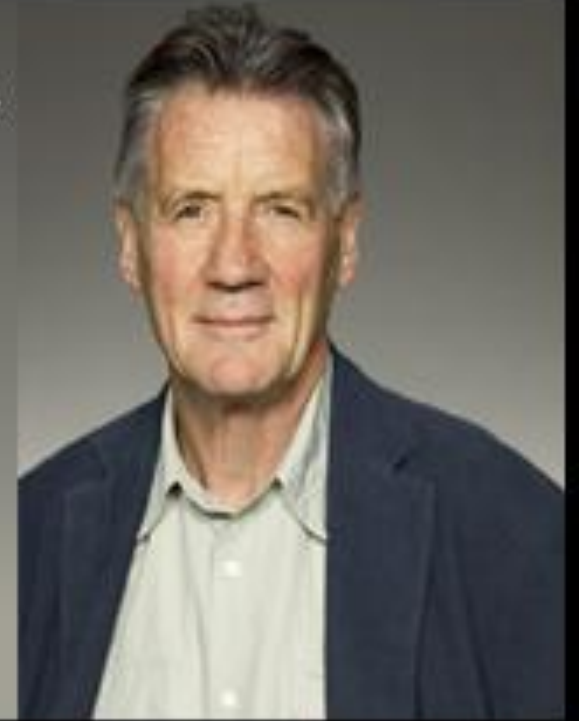
---

'The study of geography is about more than just memorizing places on a map. It's about understanding the complexity of our world, appreciating the diversity of cultures that exists across continents. And in the end, it's about using all that knowledge to help bridge divides and bring people together'. Barack Obama

"Geography illustrates the past, explains the present and prepares us for the future..."

What could be more important than that?"

- Michael Palin



# Why should you choose GCSE Geography?

---

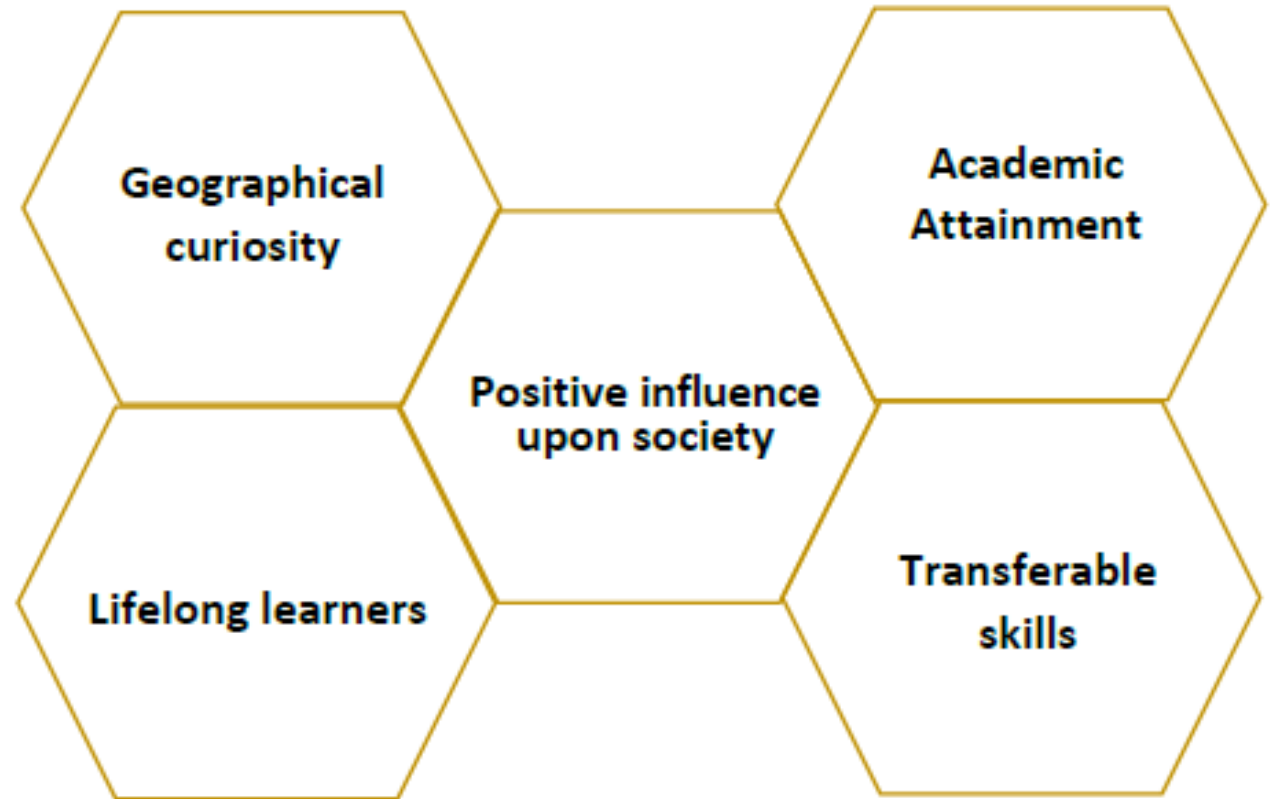
- **Understand the world:** Explore local, national, and global social, economic, and environmental issues.
- **Place knowledge:** Develop in-depth understanding of the UK and global geography.
- **Relevant knowledge:** Study global challenges and gain skills valued by universities and employers.
- **Broad and flexible:** Opens future study and career options, linking arts and sciences.
- **Hands-on learning:** Fieldwork, virtual fieldwork and practical activities
- **Critical thinking:** Tackle big issues, analyse data, and construct strong arguments.
- **Teamwork and communication:** Build collaboration, research, and presentation skills.

# Why should you choose GCSE Geography?

---

The aim for the Geography department when teaching students GCSE Geography.

Geographical Association award application in process.



# Paper 1: Course Content & Assessment

## Section A: Hazards

- Earthquakes, Volcanoes, Tsunami, Tropical Storms, Climate Change & Extreme Weather

## Section B: Living world

- Ecosystems, Tropical Rainforests, Hot Deserts

## Section C Uk Physical landscapes

- Rivers: Processes and human interaction
- Coasts: Processes and human interaction

### Paper 1: Living with the physical environment

#### **What's assessed**

3.1.1 The challenge of natural hazards, 3.1.2 The living world, 3.1.3 Physical landscapes in the UK, 3.4 Geographical skills

#### **How it's assessed**

- Written exam: 1 hour 30 minutes
- 88 marks (including 3 marks for spelling, punctuation, grammar and specialist terminology (SPaG))
- 35% of GCSE

#### **Questions**

- Section A: answer all questions (33 marks)
- Section B: answer all questions (25 marks)
- Section C: answer any two questions from questions 3, 4 and 5 (30 marks)
- Question types: multiple-choice, short answer, levels of response, extended prose

# Paper 2: Course Content & Assessment

## Section A: Urban Issues

Newly Emerging Economies, tourism,  
Sustainable urban development

## Section B: Economic world

Development, Uk's changing economy

## Sections C: Resource management

Food, Water, Energy

### Paper 2: Challenges in the human environment

#### What's assessed

3.2.1 Urban issues and challenges, 3.2.2 The changing economic world, 3.2.3 The challenge of resource management, 3.4 Geographical skills

#### How it's assessed

- Written exam: 1 hour 30 minutes
- 88 marks (including 3 marks for SPaG)
- 35% of GCSE

#### Questions

- Section A: answer all questions (33 marks)
- Section B: answer all questions (30 marks)
- Section C: answer question 3 and one from questions 4, 5 or 6 (25 marks)
- Question types: multiple-choice, short answer, levels of response, extended prose

# Paper 3: Course Content & Assessment

## Section A: Issue Evaluation

- Prerelease booklet and decision-making exercise

## Section B: Fieldwork investigations

- Skills – Maths, Data, Statistics, Sketching, Map Work
- Physical fieldwork: East Head, West Wittering (Year 11 September)
- Human fieldwork: Portsmouth City Centre (Year 10 June)

### Paper 3: Geographical applications

#### What's assessed

3.3.1 Issue evaluation, 3.3.2 Fieldwork, 3.4 Geographical skills

#### How it's assessed

- Written exam: 1 hour 15 minutes
- 76 marks (including 6 marks for SPaG)
- 30% of GCSE
- Pre-release resources booklet made available 12 weeks before Paper 3 exam

#### Questions

- Section A: answer all questions (37 marks)
- Section B: answer all questions (39 marks)
- Question types: multiple-choice, short answer, levels of response, extended prose



# Fieldwork Opportunities

Physical Fieldwork – Coastal  
Fieldwork at East Head, West  
Wittering (Year 10 June)

Human Fieldwork – Urban  
Environments Fieldwork in  
Portsmouth City Centre (Year 11  
September)

Skills – Maths, Data, Statistics,  
Sketching, Map Work





# Course Content & Assessment

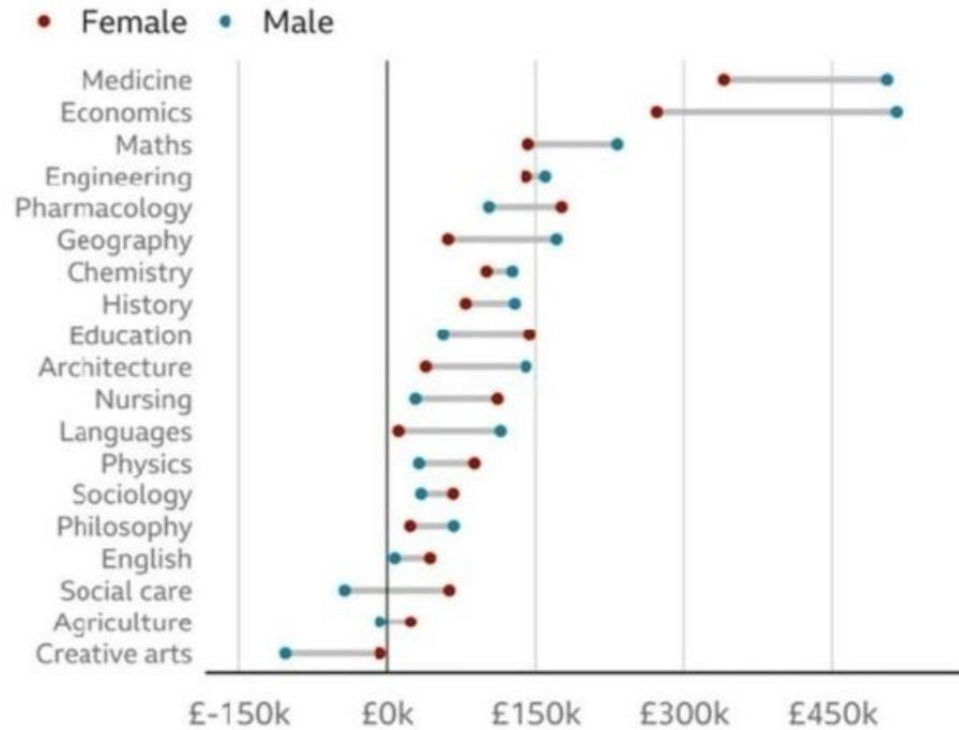
---

- 3 exams
- Longer style exam questions (9 marks)
- No coursework
- SPAG (3 marks on some 9 mark questions)

# Outcomes from studying GCSE Geography

## Subject choice impacts lifetime earnings

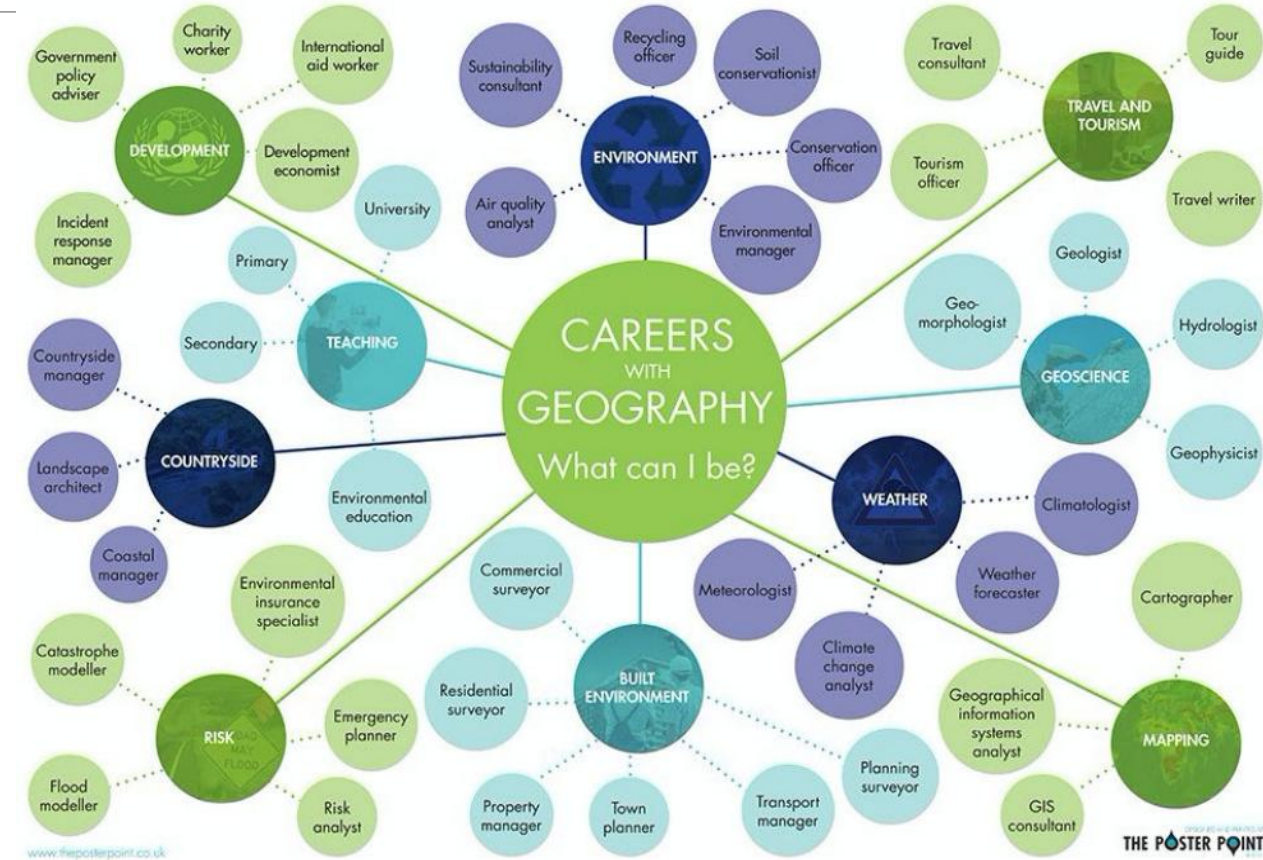
Effect of undergraduate degrees on lifetime earnings, by subject studied, accounting for taxes and loans



Note: England only, average discounted present value (DPV) cash returns

Source: IFS, 2020

BBC



# Figures who have studied GCSE Geography and gone on to study Geography at University

- **David Attenborough** – Natural historian and broadcaster; studied Natural Sciences with a Geography focus.
- **Prince William, Duke of Cambridge** – Studied Geography at the University of St Andrews; involved in environmental and conservation work.
- **Bear Grylls** – Adventurer and TV presenter; studied Geography at the University of London.
- **Michael Palin** – Comedian, writer, and travel documentarian; studied Geography at Oxford University.
- **Tim Peake** – British astronaut; studied Environmental Science and Aerospace-related subjects; first official UK ESA astronaut.
- **Emma Watson** – Actress and activist; studied Geography-related subjects in environmental studies at university level.
- **Al Gore** – Former US Vice President and environmental advocate; studied Geography and Environmental Studies.
- **Jeremy Paxman** – Journalist and broadcaster; studied Geography at the University of Cambridge.
- **Simon Reeve** – Travel writer and broadcaster; studied Geography at Oxford University.
- **Sebastian Coe** – Olympic athlete and politician; studied Geography at Loughborough University.





# International Geography Trips

**Iceland 2024**

**Morocco 2025**

**Fuerteventura  
October 2026**

**ICELAND TRIP  
2024**  
YEARS 10 - 12



# Expectations of students

---

- A **keen interest in the world** (both physical and human)
- Longer style **nine mark exam questions** (9 marks, 12 in total with SPaG)
- **Positively contribute** to the classroom environment.
- **Actively participate in lessons** through questioning and discussion.
- A **commitment to prep and revision**.
- **Attendance of revision sessions on Monday period 8** starting in **Year 11**.
- Come properly equipped – **exercise book, textbook and iPad**.

# Future options post GCSE Geography

---

## Direct routes/next steps

***GCSE  
Geography***

***A-Level Geography***

Countryside Management

***BTEC Travel & Tourism***

Environment Science (New A  
Level 2025)

## Indirect routes /benefits

History, Philosophy, Ethics and Religion (PRE), Politics, English Literature, Sociology, Psychology, Economics, Business Studies, Extended Project Qualification.



# Any questions?

---

If you have any questions regarding the content of the course and how it is assessed, please contact me using [dwillcox@seaford.org](mailto:dwillcox@seaford.org)