



Seaford College

Prep · Senior · Sixth Form



**New Student Pack for
Students and Parents 2026**

CONTENTS

Induction Days/Programme	2-4
Senior School Handbook	5-9
Boarders Information – Start of Term	10
Clothing List	11-13
School Equipment	14
iPads	15
Music Lessons	16
LAMDA	17
Dance	18
Combined Cadet Force	19
Duke of Edinburgh's Award	20
Outdoor Education	21
Fee Information	22
Bank Details	23
Future Term Dates	24



INDUCTION AFTERNOON PROGRAMME FOR YEAR 9

MONDAY, 29th June, 2026

- 2.00pm All students to arrive at the Johnson Centre
(Parents drop off)
- Year 9 parents to return to the Mansion at 4.30pm
for a barbeque**
- 2.05pm Welcome
- 2.15pm Year 9 Tutor Group Induction Programme Talks
in the Johnson Centre:
Welcome: Director – Head of Middle School and
Head of Year
- 2.45pm Tutor Team Building:

Introduction to your tutor and tutor group with a tour
of Seaford College
- 3.30pm Team Building Games
- 4.30pm Parents return for barbeque on Mansion terraces.
The Head of Year, tutors and boarding house parents
will be present
- Students are expected to be dressed in their
current school uniform**



Love to learn

ACADEMIC INDUCTION DAY PROGRAMME FOR YEAR 12

MONDAY, 29th June, 2026

- 8.40am Arrival and registration of students – Johnson Centre
- 8.50am Welcome and introduction to the day
(Director – Head of Sixth Form and Head of Year 12)
- Programme and subject choices for the day
- Life in the Sixth Form community
- 9.30am Subject options – programme of induction lessons until
 2.10pm (including lunch)
- 2.15pm End of day (departure from the Sixth Form Centre)
- Optional Sport sessions

Dress guidelines – smart casual

No jeans or denim, shorts, flip-flops, open sandals, trainers, T-shirts

For example:

- Boys: chinos or similar, proper shoes, shirt
 (tie not necessary today)
- Girls: skirt (reasonable length, not clingy) or smart trousers,
 pumps or similar (comfortable for walking, not high heels),
 blouse/top covering shoulders (no thin or spaghetti
 straps, no cropped tops etc.)



Love to learn

INDUCTION PROGRAMME FOR YEAR 12

First Week of Term

All Year 12 students will arrive at the College for 8.20am and go to the Sixth Form Centre. Students will spend time with their tutor and tutor group. They will also have their first initial lessons in their subjects.

On Friday, students depart at 8.45am for the induction trip, returning Friday evening for the 5.45pm coaches*. Full details will be sent separately.

*Please note, we aim to arrive back in time for the coaches but if we are delayed, we will inform parents, carers and guardians.

Second Week of Term

All students will undertake the standard Learning Support testing, and ALIS testing.

Please note:

All Year 12 boarders will be able to arrive from **7.00pm onwards** on Wednesday, 2nd September to enable them to settle into their boarding house. All other boarders must arrive from 7.00pm and not before.



Love to learn

WELCOME TO THE SENIOR SCHOOL

Mr Matt Williams – Headmaster
Mr W Yates – Senior Deputy Head
Mr A Arya – Deputy Head
Mr S d'Agar – Deputy Head
Mr James Kimber – Director – Head of Sixth Form
Mr G Vernon – Director – Head of Middle School
Mrs L Stitt – Director of Student Personal Development
Mrs J Forman – Assistant Head of Safeguarding,
Wellbeing and Resilience
Mr M Pitteway – Director of Boarding
Revd. C Datchler – School Chaplain

Each student is assigned a form tutor. Tutors have a key role in every student's life, monitoring academic progress, encouraging and supporting participation in the life of the College, as well as monitoring standards of behaviour and dress. They build a detailed profile of the students, enabling them to set realistic targets and to recognise their strengths and weaknesses. The tutors for the academic year 2026/2027 will be communicated separately before the start of the new academic year.

Students will meet with their tutor for registration each morning at 8.25am and each afternoon at 4.20pm.

Parents are encouraged to contact the relevant tutor or Head of Year – or house parent for boarders – without delay if they are anxious or concerned about any aspect of their child's welfare.

FURTHER INFORMATION

ATTENDANCE

We aspire to high levels of attendance from all students. Regular school attendance is crucial for students' academic progress, academic outcomes, personal development and wellbeing.

Students are expected to be present in person for the duration of each school day and are expected to arrive on time to school and attend all timetabled lessons on time. Registration takes place at 8:25am and all students must be in their tutor rooms by this point.

To report absences, parents should complete the below form for planned absence requests, same-day absence and early pick-up/departure: [Click Here](#)

Alternatively, you can advise us by phone: 01798 867887 or email: absence@seaford.org

School activities are usually held between 4.30-5.30pm. A full programme of activities is published each term, to which students sign up through their tutors.

APPEARANCE AND DRESS

All students are expected to arrive at school and to leave school dressed in full school uniform. It is expected that all students maintain a high standard of dress and personal appearance. Please refer to Seaford College's Appearance and Dress Policy for guidelines.

ASSESSMENTS

All students receive three reports a year: two full reports with progress data and comments, and one data snapshot report with progress data only. All reports come with a tutor summary.

BULLYING

We are committed to providing a caring, friendly and safe environment for all our students. Bullying of any sort is unacceptable at our school. Please contact your child's tutor or Head of Year if you suspect that bullying is taking place. Please refer to the Seaford College Policy document for full details of our Anti-bullying Policy, which can be found on the Seaford College website www.seaford.org.

COLLECTION (End of School Day)

Coaches depart from the school at 5.45pm. Students must wear seat belts, remain seated throughout the journey and behave properly. Students not travelling on the coaches may be collected from school from 5.30pm (not before, please, unless specific permission has been granted). All students are expected to travel in school uniform to and from the school.

FIXTURES

The College takes pride in their sporting fixtures against other schools, and many students will represent the school in one or more sports. Many of these fixtures will take place on Saturdays, and it is a requirement that all students are available for selection to represent the school, and will honour this commitment. If, for any reason, your son or daughter is unavailable one particular weekend, please do let the Sport Department or tutor know at the earliest convenience and with no less than four days' notice.



FLEXI-BOARDING

Flexi-boarding is available for an occasional night during the week (maximum of two nights per week). **House parents require 24 hours' written notice from parents and flexi-boarding is subject to availability.** The charge is £80.00 per night.

STORAGE

Book lockers and sports bag storage for day students are located in various locations around the school to ensure that sports clothing and equipment can be stored safely. iPads should be kept in book lockers or the boarding house when not in use during the school day.

MEALS

A wide selection of meals is available at lunchtime, including vegetarian and special diets for those who register. Year groups generally dine together. The College involves students and staff in discussions and decisions about catering through the school councils which meet termly.

MEDICATION

All matters relating to medication for students should be discussed with Sister Scott on 01798 867831.

MOBILE PHONES

Please ensure that all mobile telephones brought into school are insured. The school cannot accept any responsibility for loss, damage or theft, and they are excluded on the personal effects insurance. It is a good idea to write down the IMEI number and keep this safe at home. Please refer to the Acceptable Use Policy for Mobile Devices (Senior School), which can be found on the Seaford College website. The above statement also includes headphones, smartwatches and any other type of personal device. All students in the Middle School who bring a phone to school will hand in their phone to their tutor each morning. Phones are then stored in a locked safe until afternoon registration.

OFF GAMES

If a student is injured or ill, the Sport Department need to be informed of this with a letter from a parent or guardian; this letter should be presented at the start of the PE or Games session, or before. If the student is to be off Games for more than two lessons, then a doctor or physiotherapist's note is required; this will then be kept in our long-term injury file.

We like to think that there is actually no such term as 'off Games', as we feel all students can be given some form of health and wellbeing provision to do at an appropriate level to their injury or illness (extent depending). This can include observation and analysis of colleagues, scoring, umpiring/refereeing, peer coaching, flexibility/stretching work, or participating at a level with which they feel comfortable.

For the reasons listed above, all students are required to bring appropriate sports kit to suit the activity at the time. Indoor lessons – tracksuit, shorts, polo shirt, trainers. Outdoor lessons – appropriate footwear, tracksuit, waterproofs etc.

This policy has been put in place so that all students are able to receive the best sports provision possible, which also ensures inclusion.

PERSONAL BELONGINGS

Students are discouraged from bringing into school valuable items or large amounts of money. Day students are advised not to bring into school personal electronic devices which are not needed for the school day.

PREP (HOMEWORK)

For all students in the Middle School and Sixth Form, appropriate structured time is provided for the completion of prep or private study. There should be an expectation that it will also be necessary to complete either directed prep tasks, or independent study tasks, at home either in the evening or at weekends.

PREP

All student prep tasks are set using Firefly, an online virtual learning platform. Parents are able to view tasks via the parent portal and can discuss and monitor prep with their children. Prep is also published as part of each student's timetable at the beginning of term, which is available online through the Firefly parent portal. In addition, many tasks will be completed using Microsoft OneNote.

COACHES

Coach services are charged annually in September.

FINALLY

Seaford College is a friendly community where we all know each other. There may be disagreements, just as there are at home, but we expect these to be sorted out in a prompt and civilised manner.

This booklet is intended to give parents and students a broad outline of the Senior School. If there is something more that you would like to know, please do not hesitate to get in touch.



Love to learn

ADDRESS

Seaford College
Lavington Park
Petworth
West Sussex GU28 0NB

TELEPHONE NUMBERS

Seaford College (Senior School): **01798 867392**

Seaford College email: **info@seaford.org**

Seaford College Prep School: **01798 867893**

Seaford College Medical Centre: **01798 867831**

Seaford Medical Centre email: **medicalcentre@seaford.org**

**For more specific telephone numbers,
please refer to the Seaford College termly calendars.**



Love to learn

BOARDERS' ARRIVAL INSTRUCTIONS FOR WEDNESDAY, 2nd SEPTEMBER, 2026

7.00pm onwards:

Boarders may begin arriving

Your child's house parent will be in touch to confirm arrival details and to explain how to find the relevant boarding house.

Girls to go directly to Mansion House where you will be met by your house parent.

If you need to contact them, then please ring:

Ms Le Barth in Mansion – 07557 439694

Boys park in car park and you will be met and directed to your boarding house by staff out meeting and greeting.

If you need to contact them, please ring:

Mr Redman in Walled Garden East – 07557 439697

Mr Pitteway in Walled Garden West – 07557 439695

NB: Overseas students, if your flights arrive early into the UK, you should be collected by your guardians who should bring you to the school, but not before 7.00pm, please.

WHERE TO PARK

Please follow the signs to park as close to the boarding houses as possible.

Essentially, parking for Mansion is up at Mansion (or in the car park next to the Mansion).

Parking for Walled Garden is in the Science car park in front of the Music Department.

Any problems then please contact the relevant house parent or Director of Boarding, Mr Pitteway, in Walled Garden West on 07557 439695.

BOARDING HOUSE HANDBOOK

Each boarding house has a personalised house handbook explaining the basics to you.

Once the boarding house allocations have been confirmed during late Summer Term, you will be sent an introduction letter from your house parent and the relevant house handbook directly from the house parents.

Parents are reminded of the Terms and Conditions requiring a full term's notice for a change in boarding status and for a different fee charge category to be applied.



Love to learn

CLOTHING LIST

Every article, including boots and shoes, must be marked with the student's name. Personal clothing items for boarders should also be name taped. It is strongly recommended that both day students and boarders mark all their clothing.

REGULATION CLOTHING MUST BE PURCHASED FROM

www.perryuniform.co.uk (uniform) or
www.bluebloodonline.co.uk

	BOARDERS		DAY STUDENTS	
	Boys	Girls	Boys	Girls
School Uniform – www.perryuniform.co.uk				
School blazer (Yr 9-11)	1	1	1	1
Dark grey or charcoal trousers	2		1	
School kilt		1		1
Grey tailored trousers (optional for girls) (Only available from Perry Uniform)		1		1
Girls ankle socks Grey or Black (for trousers only)		6		5
Long sleeved white shirts	6		5	
White open-neck blouses (Yr 9-11) Long or Short sleeved	6		5	
School tie or House tie	1		1	
Navy blue crested V-neck pullover (Yr 9-11)	1	1	1	1
Socks (plain grey or black)	6		5	
Navy, black or flesh-coloured tights		6		5
White ankle socks or white trainer socks		6		5
Black shoes (polished)	1	1	1	1



Love to learn

Sports Kit – www.bluebloodonline.co.uk

Girls Year 9-13 – Compulsory Sports Kit

- Club rain jacket
- Club tracksuit bottoms
- Club mid-layer or Fleece
- Club skort or Club short
- Sports socks ('Seaford College socks') x2 pairs (footless socks are also available for senior students who choose to wear white grip socks underneath)
- Girls' Reversible Games shirt (Games sessions, fixtures and training)
- Club dri-fit T-shirt (PE lessons and summer term fixtures)
- 2 pairs of trainers (one for indoor use, one for outdoor use – both from any sports shop)
- Sports kit bag (medium holdall)
- Swimming kit – dark blue (from Blue Blood or any sports shop) plus Seaford swim hat

Boys Year 9-13 – Compulsory Sports Kit

- Club rain jacket or Club contact top
- Club tracksuit bottoms
- Club mid-layer or Fleece
- Boys' Reversible Games shirt (games sessions, fixtures and training)
- Rugby shorts and Club short
- Sports socks ('Seaford College socks') x2 pairs (footless socks are also available for senior students who choose to wear white grip socks underneath)
- Club dri-fit T-shirt (PE lessons and Summer Term fixtures)
- 2 pairs of trainers (one for indoor use, one for outdoor use – both from any sports shop)
- Rugby/football boots with IRB approved studs (depending on year group and term –from any sports shop)
- Sports kit bag (medium holdall)
- Swimming kit – dark blue (from Blue Blood or any sports shop) plus Seaford swim hat

Girls and Boys Year 9 & 10 –

Equipment required (per relevant term). Can be bought from any sports shop

- Hockey stick
- Mouth guard for hockey and rugby (See 'Opro' information supplied separately)
- Shin guards for hockey and football
- Cricket bat, pads and box
- Athletics spikes and Tennis racquet, optional for the Summer Term

Girls and Boys Year 11 & 13

All students will be expected to wear full Seaford sports kit for their Games sessions.

Students are also expected to have the sports-specific kit required for their chosen sports.

- Hockey – Shin pads, mouth guard, hockey stick, astro trainers

- Rugby – Mouth guard, football/ rugby boots
- Cricket – Cricket bat, pads, box and spikes
- Tennis - Racquet

BOARDERS-ONLY KIT LIST

This information is for guideline purposes only.

	No.
Overnight bag/sports bag	1
*Duvet (synthetic preferably to reduce allergy risks)	1
*Duvet covers	2
*Pillows (synthetic)	1
*Sheets	2
*Pillowcases	2
Underwear	10
Night attire	2
Toiletries	As required
Towels	2
Home clothes	As required
Laundry bag – a large general laundry bag is supplied by the school, but you need to bring a small laundry bag for your underwear (Small white zip laundry bag)	1

***Overseas and full boarders are not required to bring these to school**



Love to learn

STATIONERY EQUIPMENT LIST

For ALL students:

Backpack suitable in all weathers for carrying books etc. (available from Blue Blood Sports – this is really important as the site is spread out and the backpack will protect books)

- Pencils
- Pens (blue, black, red and green)
- Pencil sharpener and eraser
- 30cm ruler
- Geometry set
- Pair of compasses
- Calculator
- Scissors
- Glue (Pritt Stick)
- Coloured pencils
- Ink eradicator pen (not Tippex)



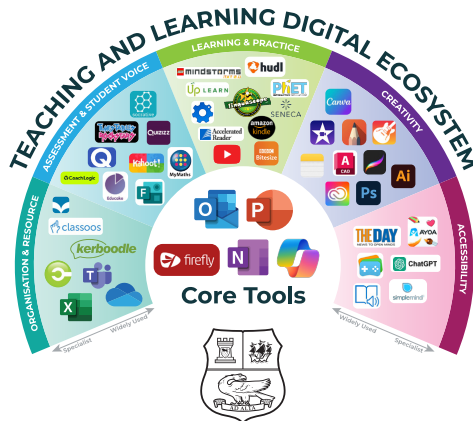
Seaford College Student iPad

Every student at Seaford is expected to have a school-managed Apple iPad, with a stylus and a keyboard case (with some exceptions for Sixth Formers). The iPads are a teaching and learning tool used to build digital literacy and creativity, both inside and outside of the classroom. Our teachers make excellent use of the capabilities that the combination of Microsoft and Apple technology can bring to enhance the student experience by increasing creative opportunities, increasing students' accessibility to learning, enhancing students' engagement, and improving students' learning. Using the iPads also allows seamless cohesion between our Apple TVs, which are placed in every classroom, and the Apple Classroom or the teacher app, which teachers use to restrict devices to apps and tools in lessons and monitor students' work and provide instant verbal, audio or written feedback.

Parents must buy the Apple iPad packages through Seaford's Apple store, as this allows us to ensure consistency across all devices and enables us to enrol the devices in the Apple Management Software, giving us access to the abilities and advantages listed above. We strongly recommend purchasing a stylus and a case for the iPad that includes a keyboard and acts as protection to the screen. This will allow students to develop their touch-typing skills as well as protect the iPad from damage.

When purchasing the 'Apple bundle' during the prescribed window, it is also possible to purchase insurance for the iPad. You may, of course, wish to take out your own insurance on the device. Seaford College provides students with access to the full Microsoft Office 365 suite of apps and tools, the full Apple learning suite, the ability to access the Abode Creative Suite of apps and a range of other educational tools and abilities that are age-specific to our students. These are all provided for educational purposes.

Students must adhere to all College policies and guidelines including the Acceptable Use Policy, Mobile Devices Policy, Anti-Bullying Policy, and Student Behaviour Policy to maintain that access. Further details will be shared with parents about how to purchase the iPads.



Love to learn

MUSIC LESSONS – INDIVIDUAL TUITION

Seaford College offers tuition in the following instruments:

- Piano
- Violin
- Trumpet
- Flute
- Organ
- Viola
- Trombone
- Clarinet
- Voice
- Cello
- Tuba
- Saxophone
- Drum Kit
- Double Bass
- Euphonium
- Recorder
- Ukulele
- Electric Guitar
- French Horn
- Music Theory
- Bassoon
- Oboe
- Classical Guitar
- Cornet
- Bagpipes
- Bass Guitar

The cost of 10 x 30-minute lessons is £240 per term

If you would like your son or daughter to participate in music lessons, please complete the online form in your information pack as soon as possible. This also applies to any Music Scholars.

By returning the form for music lessons, parents agree to pay the fees, as published by the school, in advance to the teacher, no later than the first lesson of each term. The teacher will teach 30 lessons in the academic year but may teach more (or less) than ten lessons in any one term. If the teacher misses any lessons, these will be made up or refunded if they are unable to teach 30 lessons in the academic year. The teacher is not obliged to make up lessons missed by the student but will do so if possible.

The course of the student's studies – including repertoire, public performances and entry for all examinations and competitions – remains under the teacher's professional direction at all times, in consultation with the parent where appropriate.

If a parent wishes lessons to cease, they must give a full term's notice in writing, addressed directly to the teacher and Performingarts@seaford.org. If a parent gives less than a term's notice, they will be required to make a payment to the teacher of a full term's fees in lieu of notice.



Love to learn

LAMDA LESSONS – INDIVIDUAL TUITION

LAMDA (London Academy of Music and Dramatic Art) is one of the leading national drama schools, and it offers external examinations in a variety of disciplines including acting, public speaking, and verse and prose. Examinations are held at least once a year with an external examiner through a progression of grades and medals for which certificates are awarded. Examinations can be taken from Introductory Grade 1 up to Gold Medal (Grade 8). LAMDA lessons can be taken by students from Year 2 through to Year 13. Older students may also study for RADA (Royal Academy of Dramatic Art) Shakespeare awards.

The advantages of taking LAMDA lessons include:

- development of self-confidence
- mastering of technique and diction
- complements academic subjects (e.g. English, History, Drama, Performing Arts and Media Studies)
- valuable tuition for dyslexic students
- achievement at medal-level Grade 6-8 is recognised with UCAS points

The cost of 10 x 30-minute lessons per term is £220 for individual lessons; £170 (each) for paired lessons and £150 (each) for group lessons.

If you would like your son or daughter to participate in LAMDA lessons, please complete the online form in your information pack as soon as possible. This also applies to any Drama Scholars.

By returning the form for LAMDA lessons, parents agree to pay the fees, as published by the school in advance, to the teacher, no later than the first lesson of each term. LAMDA examination fees are additional, and you will be notified in advance of the amount due. The teacher will teach 30 lessons in the academic year but may teach more (or less) than ten lessons in any one term. If the teacher misses any lessons, these will be made up or refunded if they are unable to teach 30 lessons in the academic year. The teacher is not obliged to make up lessons missed by the student but will do so if possible.

The course of the student's studies, including repertoire, public performances and entry for all examinations and competitions, remains under the teacher's professional direction at all times, in consultation with the parent where appropriate.

If a parent wishes lessons to stop, they must give a full term's notice in writing, addressed to the teacher and Performingarts@seaford.org. If a parent gives less than a term's notice, they will be required to make a payment to the teacher of a full term's fees in lieu of notice.

DANCE LESSONS – INDIVIDUAL TUITION

Seaford College offers tuition in the following dance styles:

- ISTD Modern
- RAD & ISTD Ballet
- Acro
- Contemporary
- Tap
- Musical Theatre
- Jazz

The cost of 10 x 50-minute lessons per term is £370 for individual lessons; £220 (each) for paired lessons and £160 (each) for group lessons with a maximum of six students.

If you would like your son or daughter to participate in dance lessons, please complete the online form in your information pack and return it as soon as possible. This also applies to any Dance Scholars.

By returning the form for dance lessons, parents agree to pay the fees, as published by the school, in advance, to the teacher, no later than the first lesson of each term. The teacher will teach 30 lessons in the academic year but may teach more (or less) than ten lessons in any one term. If the teacher misses any lessons, these will be made up or refunded if they are unable to teach 30 lessons in the academic year. The teacher is not obliged to make up lessons missed by the student but will do so if possible.

The course of the student's studies, including repertoire, public performances and entry for all examinations and competitions, remains under the teacher's professional direction at all times, in consultation with the parent where appropriate.

If a parent wishes lessons to stop, they must give a full term's notice in writing, addressed to the teacher and Performingarts@seaford.org. If a parent gives less than a term's notice, they will be required to make a payment to the teacher of a full term's fees in lieu of notice.



Love to learn

COMBINED CADET FORCE SERVICE

All students at Seaford College have the option of serving with the Combined Cadet Force. This begins during Year 9 and will give cadets a year longer to progress in the CCF. Cadets have the choice of joining one of the three parent service sections: Royal Navy (RN), Army, and Royal Air Force (RAF).

During their first term of service, they will learn basic military skills common to all sections, including how to wear their uniform, marching and saluting. After half-term, they carry out detailed preparation in order to set the right tone for the Remembrance Service in early November; the whole school attends this event, which is conducted in the Sports Hall, with the CCF and Music Department taking the lead. After that, cadets move on to specific-to-service training.

The CCF also organises week-long camps; one at the beginning of the Easter holidays and the second at the beginning of the summer holidays.

One is a non-uniformed, adventurous training week, offering the chance to take part in activities like mountain biking, canoeing, gorge walking, caving and hill walking, to name a few. The other is run by the Army and focuses on military topics, giving cadets the opportunity to practise skills already learned or to acquire new ones, including infantry tactics, shooting on the ranges and a planned overnight exercise. Other centrally run camps are offered by the RN and RAF during school holidays and are advertised to cadets as details are released. In addition, there are also various field days and range days taking advantage of the good relationships we enjoy with our local regular units.

All these additional opportunities are voluntary, but cadets are encouraged to attend since they are great fun, build confidence, offer excellent training value and are heavily subsidised.

During their time in the Seaford College CCF, cadets develop valuable life skills such as leadership, self-reliance, resourcefulness, endurance and perseverance.



Love to learn

DUKE OF EDINBURGH'S AWARD SCHEME

Participation in this highly regarded scheme is voluntary. We have recently started delivering the DofE Bronze Award in Year 9. This provides a really significant outdoor education focus to this year group, as well as making it far more achievable to complete all three levels (Bronze, Silver and Gold) of the award while still at Seaford College.

Expedition training is a key part of the programme, during which participants begin learning how to:

- Read a map
- Use a compass
- Draw up a route plan for an expedition
- Put up and dismantle a tent
- Select appropriate clothing for a hiking expedition
- Choose and cook food for such an expedition

They will take part in expedition training which will include a night out under canvas in preparation for a Qualifying Expedition towards the end of the Summer Term, during which they will be responsible for all the preparation, navigation and conduct of this remotely supervised activity. This inculcates many transferable skills such as self-reliance, confidence, teamwork and resilience.

We will also guide them through the process of achieving the other sections of the award.

Gold and Silver Awards are available to any student of the minimum age (15 for Silver, 16 for Gold). Gold and Silver Expeditions occur twice a year: The Seaford College DofE Guide is published in September each year, giving details of when the Silver and Gold Expeditions will take place, as well as lots of other useful advice and guidance on the award scheme.

We have also recently begun offering a Gold Paddling Expedition in July, every other year, based around the South Coast of England. This provides a different and thoroughly enjoyable alternative mode of travel, and has proved to be very popular.



OUTDOOR EDUCATION

There are various times that Seaford students can take part in outdoor education activities, both during the week, at the weekend and during the holidays.

During the week, there is the option for some students to take part in outdoor education activities during Games sessions as well as activity sessions during the last period of the day. These include climbing on our indoor climbing wall, archery, orienteering and expedition training. On Saturday mornings, there is also a full programme of activities on offer; our clay pigeon shooting range is open every Saturday of each term throughout the year, with parents and students warmly invited to attend, regardless of experience. Other activities include archery, air rifle shooting, traditional climbing, canoeing and kayaking, mountain biking, bushcraft, sailing and expedition skills.

There are also significant outdoor education overseas expeditions that are advertised as they are organised – the last trip was trekking in Morocco.



FEE INFORMATION 2026/2027

Termly fees are charged in advance and are due on the first day of term.

Senior Boarding (Full)

£18,123 per term

Senior Boarding (Weekly)

£15,866 per term

Senior Day Students (Y9-13)

£11,692 per term

Junior Boarding (Weekly)

£12,446 per term

Junior Day Students (Y7-8)

£9,359 per term

Year 6 Boarding (Weekly)

£11,762 per term

Year 6 Day Students

£8,607 per term

Year 5 Day Students

£6,463 per term

Year 4 Day Students

£6,019 per term

Year 3 Day Students

£5,631 per term

Year 2 Day Students

£4,800 per term

Year 1 Day Students

£4,537 per term

Reception Day Students

£3,798 per term

Learning Support Tuition & EAL

One-to-one £56.00

Year Funds (All Senior Day Students)

£13.00 per term

Year Funds (All Prep School Students)

£18.00 per term

House Funds (All Walled Garden)

£48.00 per term

House Funds (All Mansion)

£48.00 per term

House Funds (All Heden)

£60.00 per term

Old Seafordian Fees (All Seniors)

£5.00 per term

Flexi Boarding – Senior

£80.00 per night
£55.00 Friday Evening (Games)

Flexi Boarding – Junior

£56.00 per night

Termly lunch costs

(These are included in the fees detailed (i) (ii))

Senior School Years 9 to 13

£351

Prep School Years 6 to 8

£293

Prep School Years 3 to 5

£234

Prep School Years 1 to 2

£211

Prep School Reception

n/a

Optional insurances are available; you can opt into Fee Absence Insurance and/or Personal Possessions Insurance. To view the cover available, please go to:

<https://portal.endsleigh.co.uk>

If you wish to opt in, you can register and opt in using the same link.

The deposit paid is returned via a leaver's bill, this is issued after the end of the student's last term.

Independent Fee Payment Service

Monthly fee payment is available through an independent fee payment service. If you would like further information regarding this, there is a link on the school's website, on the fees page, which is in the Admissions section.

(stated inclusive of VAT (i) and lunch (ii) from September 2026)

BANK DETAILS

Bank: Barclays Bank
Branch: Church Street East, Woking, Surrey GU21 6AE
Account Name: The Johnson Trust Ltd. trading as Seaford College
Account No: 13194841
Sort Code: 20-97-74

For International Payments:

IBAN GB36 BARC 2097 7413 1948 41
BIC BARC GB22

When paying by BACS, please use the student's name as reference.

Please ensure that the bank charges are taken into account when requesting the amount to be transferred.



FUTURE TERM DATES

Autumn 2026 – Summer 2027

Autumn Term 2026

Term Starts – Thursday, 3rd September

Half-Term – Friday, 16th October - Sunday, 1st November

Staff Inset – Friday, 16th October

End of Term – Friday, 11th December (Term finishes at 1.15pm)

Spring Term 2027

Term Starts – Monday, 4th January

Half-Term – Friday, 12th February - Sunday, 21st February

Staff Inset – Friday, 12th February

End of Term – Thursday, 25th March (Term finishes at 1.15pm)

Summer Term 2027

Term Starts – Monday, 19th April

Bank Holiday Monday – 3rd May

Half-Term – Saturday, 29th May - Sunday, 6th June

End of Term – Thursday, 1st July (Term finishes at 1.15pm)





Seaford College

Prep · Senior · Sixth Form

Love to learn



Lavington Park, Petworth, West Sussex, GU28 0NB
Telephone: 01798 867392

www.seaford.org

The Johnson Trust. Registered Charity No. 277439

